



# Welding Hook-up    Aker Solutions / Cenovus

Ironworker Onboarding & Training



**June 2024 – Dec 2024**

- Complete CWB Approved Weld Procedure
- Complete Shop Trials & Mock-ups

**Jan 2025 – June 2025**

- Onboarding Testing & Training Ironworkers

**Aug 2025 – Oct 2025**

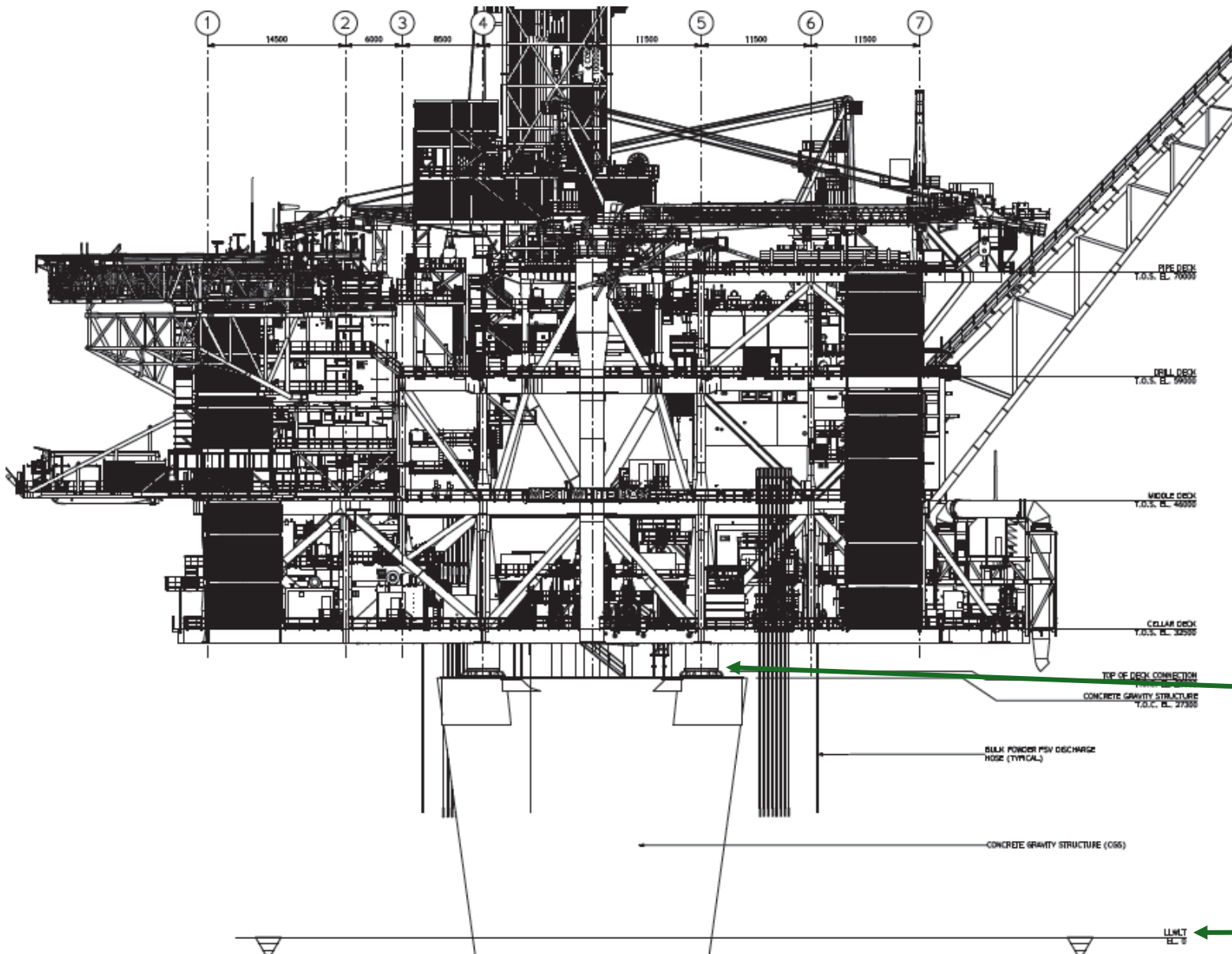
- Mobilization Offshore for Welding Execution

# Project Timeline



## Scope of Work

# WWRP Primary Interface Weld Development



West White Rose Platform

Topsides

Leg Weld Location after mating offshore

Concrete Gravity Structure (CGS)

Sea Water Level

# Project Overview / Scope



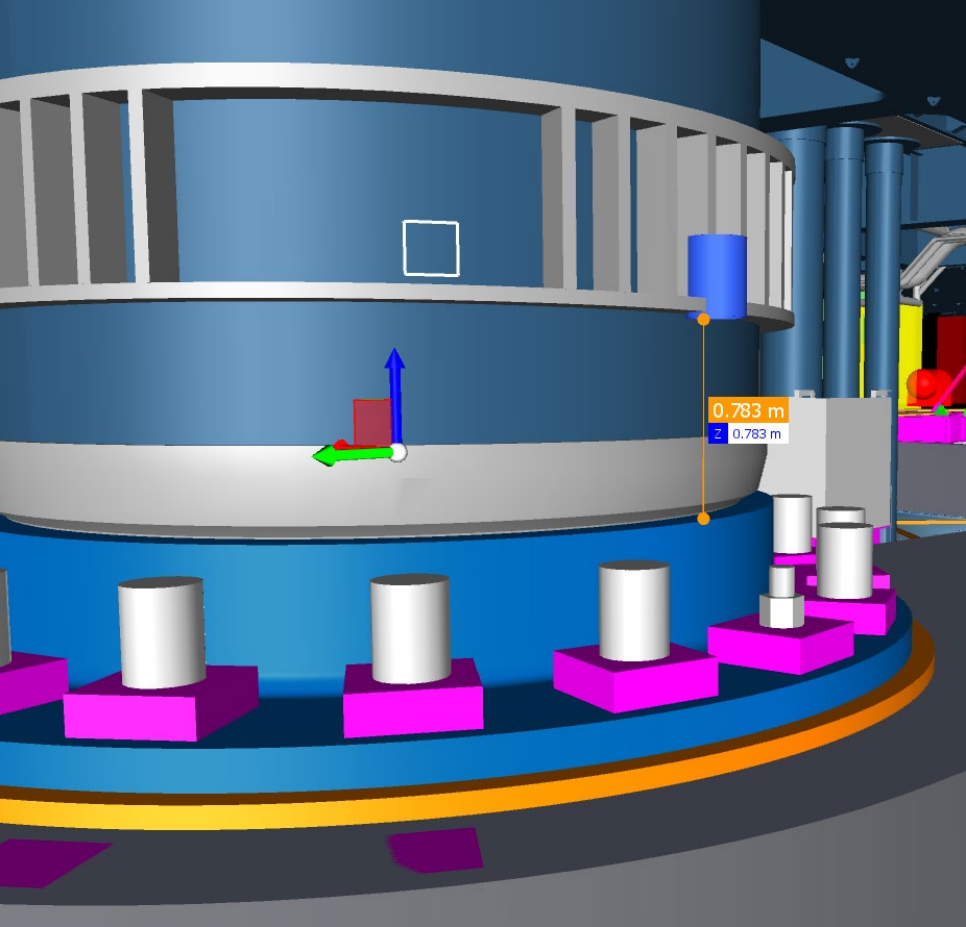
Ingleside, TX



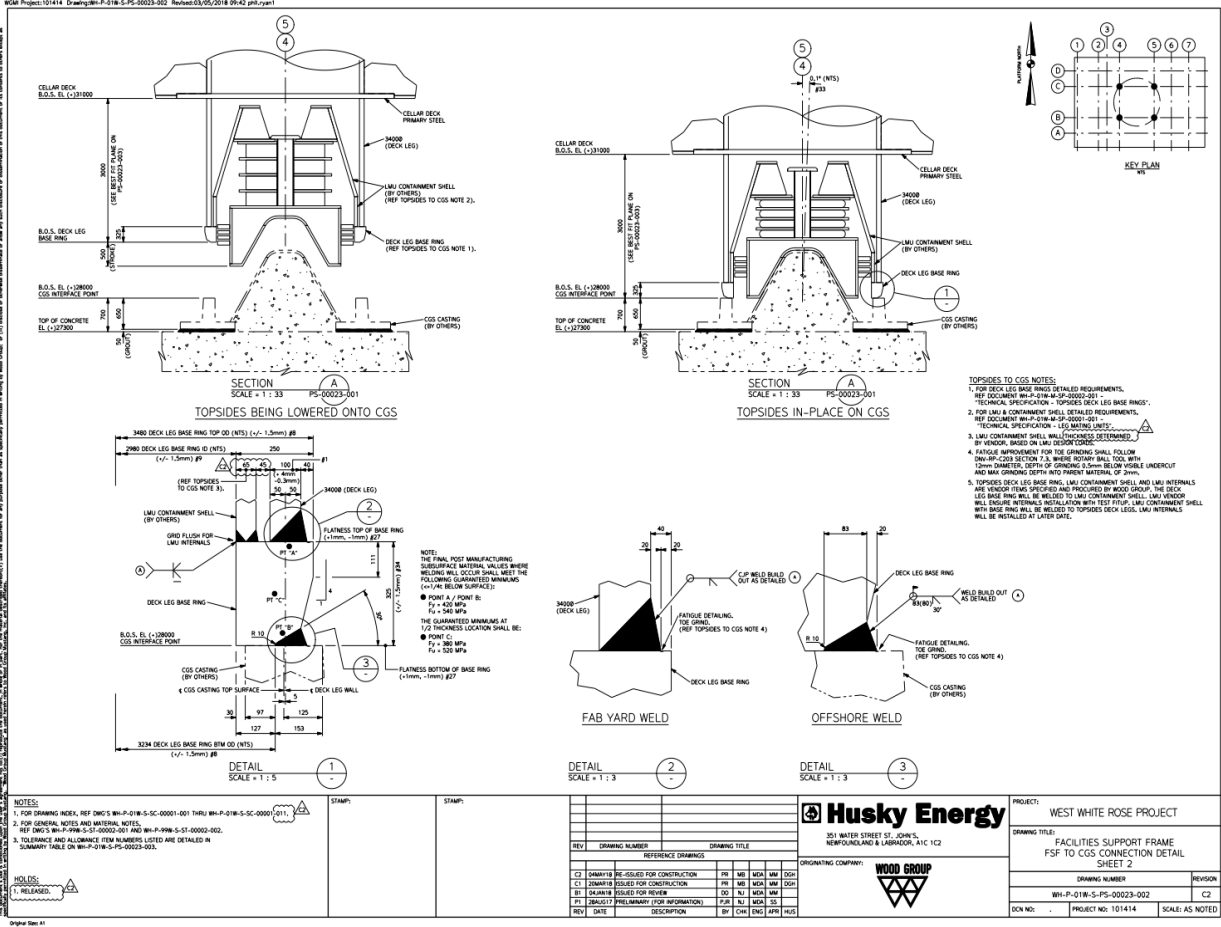
Argentia, NL



# Main Structural Leg Detail (x4)



Main Structural Leg

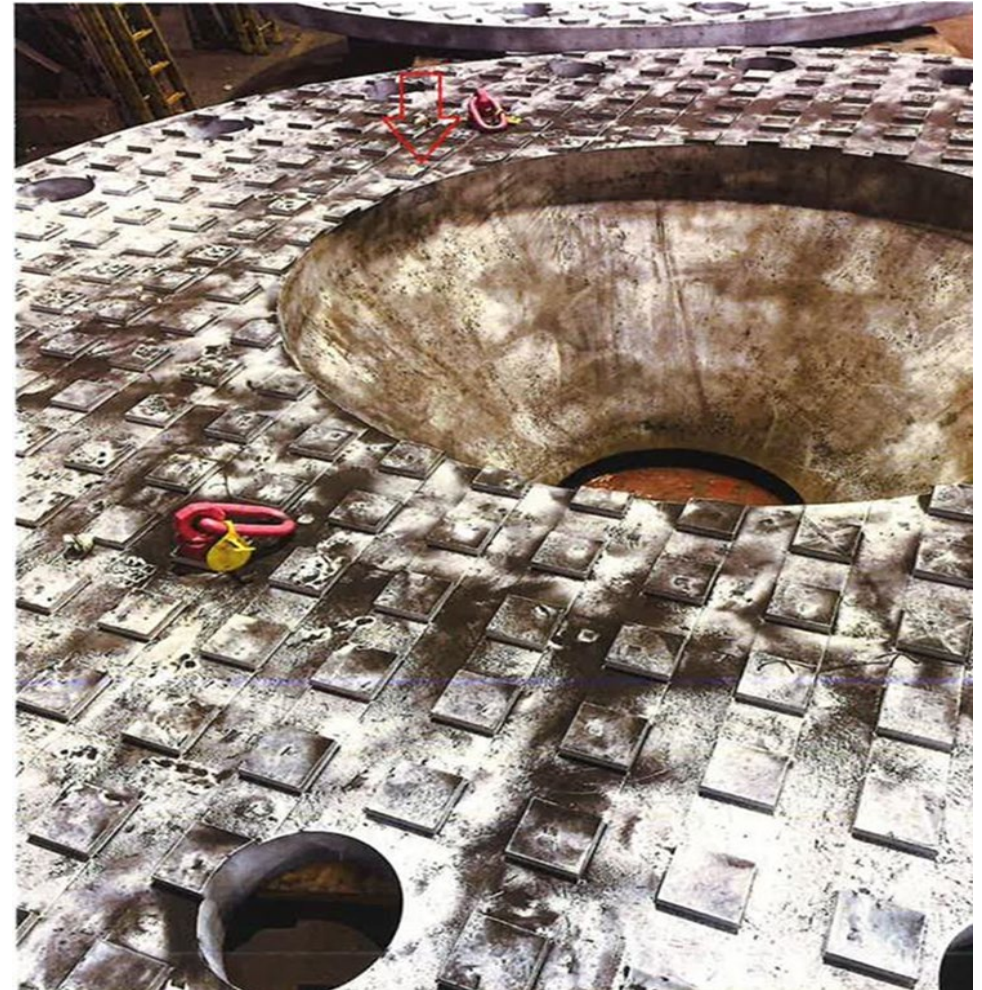


Weld Joint Detail

# CGS Casting Ring (x4)



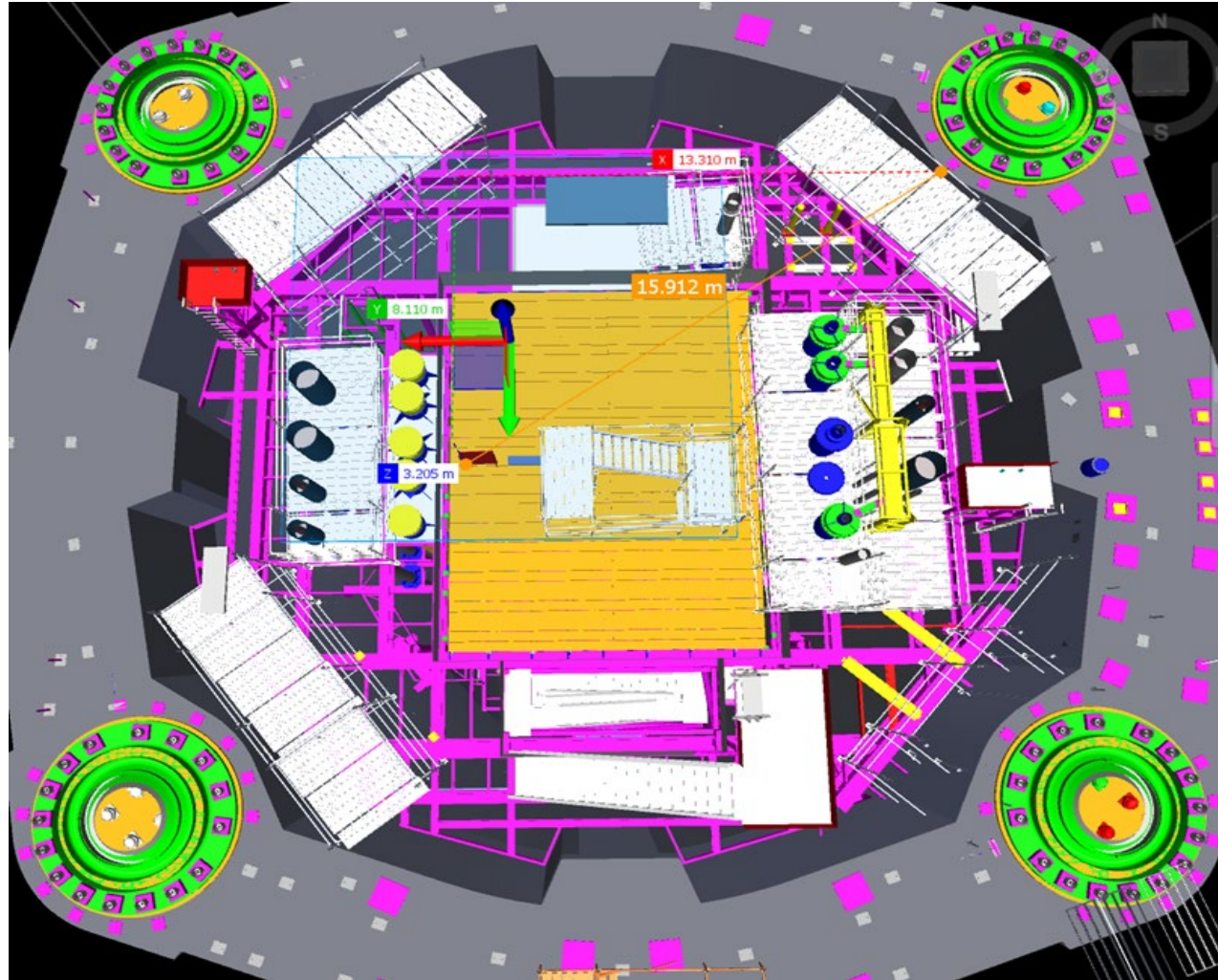
Casting Ring - CGS



Grout – Under Casting Ring - CGS



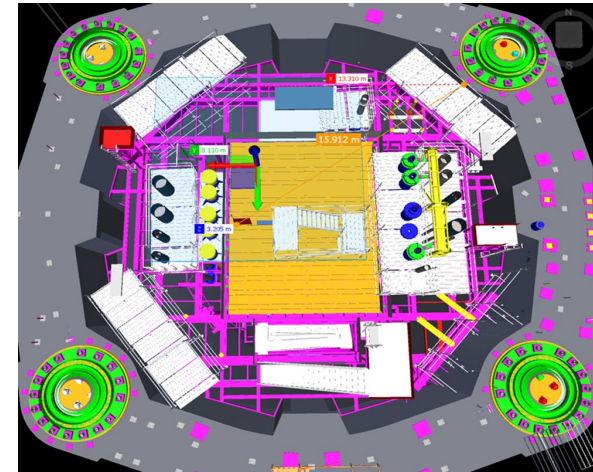
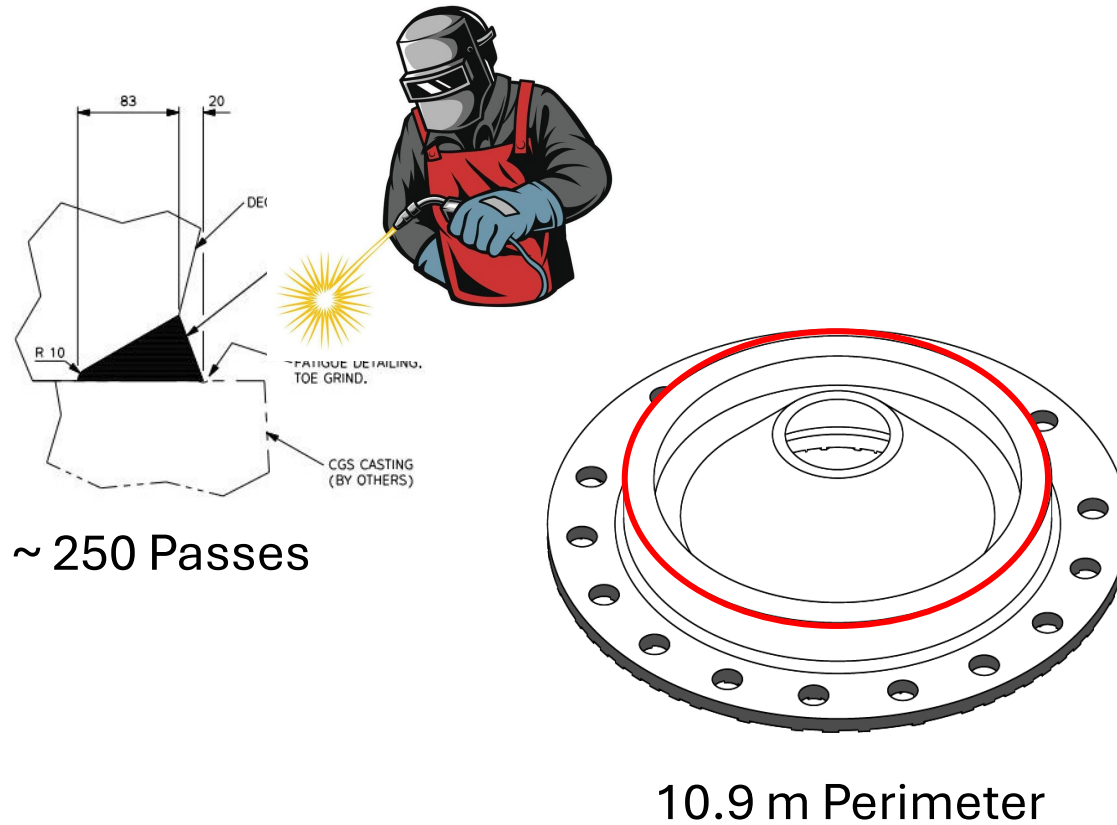
# CGS Casting Rings Arrangement



Four legs = 4 sets of Casting Rings



# Main Structural Leg Joint Welding



4 Legs

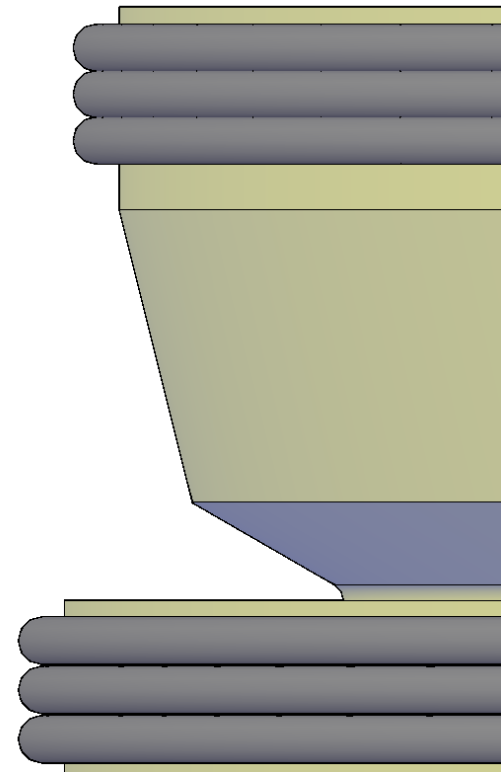
11.1 km of Welding

# Preheat Mock-Up Training

- Review Safe Operations and Set-up of Equipment



Miller Pro-Heat 35 Liquid-Cooled System



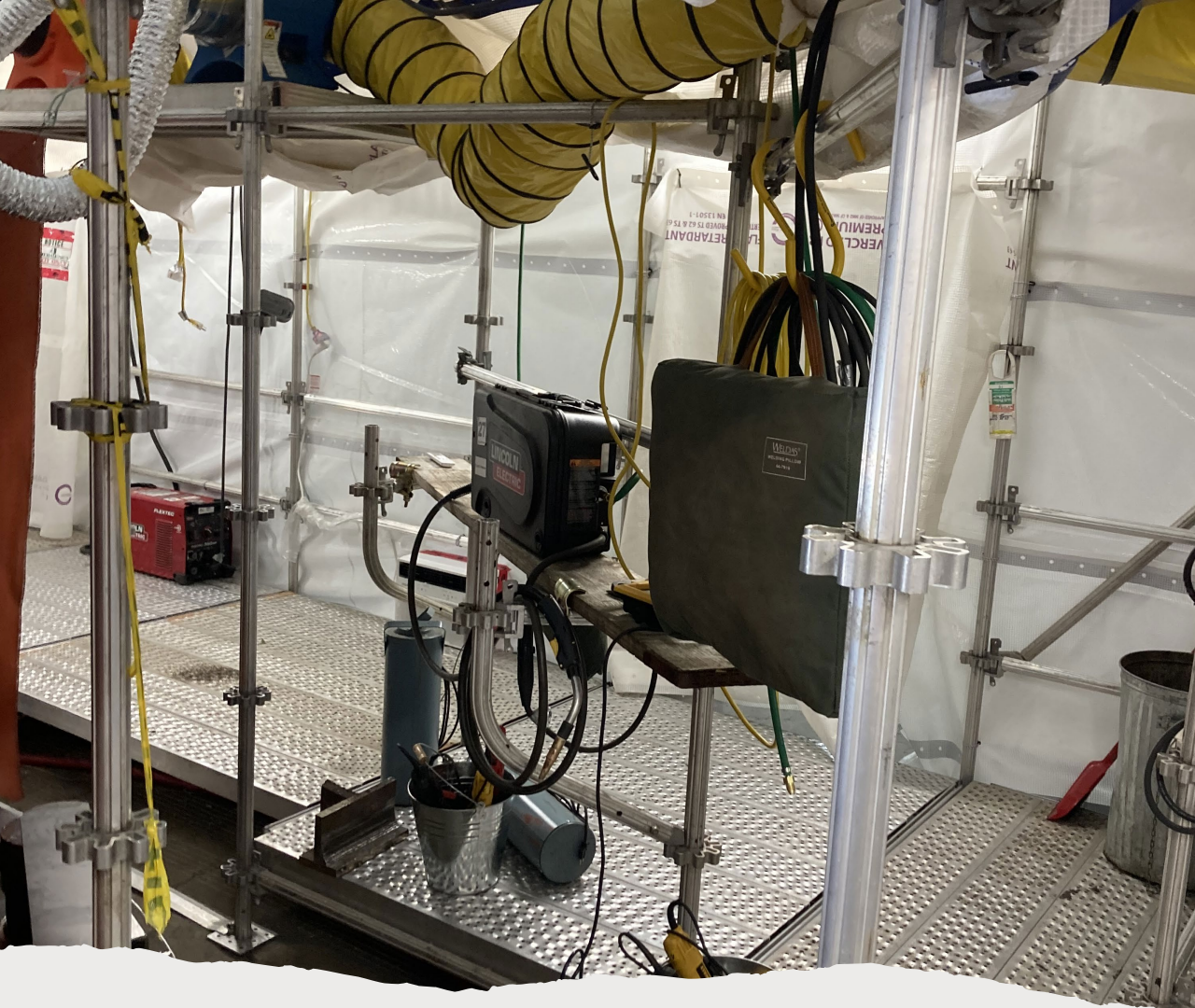
(X3) Wraps (Top/Btm)





Offshore Mock-up  
Trials





Offshore Mock-up Equipment Layout



# 2025 Onboarding Training Activities

## Onboarding Prerequisites:

- ✓ Valid S-Class & T-Class Tickets
- ✓ Pass - CAPP Medical
- ✓ Pass - D&A Testing

**Training Groups** - (x6) Training Slots (x14) Welders per Slot

| Week # | Shift Schedule | Group 1 - (14 People)  |
|--------|----------------|--|
| Week 1 | 4-10's         | CWB Qualification (Annex U)  |
| Week 2 | 4-10's         | Job Test (100mm in-position)   |
| Week 3 | 5-8's          | Basic Survival Training (BST)  |
| Week 4 | 5-8's          | Offsite training   |
| Week 5 | 6-10's         | 6 Day Week- Preheat, Grind/ Polish, Gouge /<br>Buttering / Fillet Cap Sequencing |
| Week 6 | 2-8's          | Offsite training   |

## Training Slots - Start Dates

24<sup>th</sup> Feb.  
10<sup>th</sup> Mar.  
24<sup>th</sup> Mar.  
7<sup>th</sup> Apr.  
21 Apr.  
5-May

| Week #  | Week Starting | Group 1 - (14 People)   | Group 2 - (14 People)   | Group 3 - (14 People)   | Group 4 - (14 People)   | Group 5 - 14 People                | Group 6 - (14 People)   |
|---------|---------------|---|---|---|---|------------------------------------|---|
| Week 1  | 24-Feb        | CWB Qualification (Annex U)   |   |   |   |                                    |   |
| Week 2  | 3-Mar         | Job Test (100mm in-position)  |   |   |   |                                    |   |
| Week 3  | 10-Mar        | Basic Survival Training (BST)   | CWB Qualification (Annex U)   |   |   |                                    |   |
| Week 4  | 17-Mar        | Offsite training  | Job Test (100mm in-position)  |   |   |                                    |   |
| Week 5  | 24-Mar        | 6 Day Week- Preheat, Grind/ Polish, Gouge / Buttering / Fillet Cap Sequencing | Basic Survival Training (BST)   | CWB Qualification (Annex U)   |   |                                    |   |
| Week 6  | 31-Mar        | Offsite training  | Offsite training  | Job Test (100mm in-position)  |   |                                    |   |
| Week 7  | 7-Apr         |   | 6 Day Week- Preheat, Grind/ Polish, Gouge / Buttering / Fillet Cap Sequencing | Basic Survival Training (BST)   | CWB Qualification (Annex U)   |                                    |   |
| Week 8  | 14-Apr        |   | Offsite training  | Offsite training  | Job Test (100mm in-position)  |                                    |   |
| Week 9  | 21-Apr        |   |   | 6 Day Week- Preheat, Grind/ Polish, Gouge / Buttering / Fillet Cap Sequencing | Basic Survival Training (BST)   | CWB qualification                  |   |
| Week 10 | 28-Apr        |   |   | Offsite training  | Offsite training  | 100mm in position                  |   |
| Week 11 | 5-May         |   |   |   | 6 Day Week- Preheat, Grind/ Polish, Gouge / Buttering / Fillet Cap Sequencing | BST (includes medical)             | CWB Qualification (Annex U)   |
| Week 12 | 12-May        |   |   |   | Offsite training  | Offsite training                   | Job Test (100mm in-position)  |
| Week 13 | 19-May        |   |   |   |   | 6 Day Week- Preheat, Grind/ Polish | Basic Survival Training (BST)   |
| Week 14 | 26-May        |   |   |   |   | Offsite training                   | Offsite training  |
| Week 15 | 2-Jun         |   |   |   |   |                                    | 6 Day Week- Preheat, Grind/ Polish, Gouge / Buttering / Fillet Cap Sequencing |
| Week 16 | 9-Jun         |   |   |   |   |                                    | Offsite training  |
| Week 17 | 16-Jun        |   |   |   |   |                                    |   |
| Week 18 | 23-Jun        |   |   |   |   |                                    |   |
| Week 19 | 30-Jun        |   |   |   |   |                                    |   |
| Week 20 | 7-Jul         |   |   |   |   |                                    |   |
| Week 21 | 14-Jul        |   |   |   |   |                                    |   |
| Week 22 | 21-Jul        |   |   |   |   |                                    |   |
| Week 23 | 28-Jul        |   |   |   |   |                                    |   |
| Week 24 | 4-Aug         | Target Window For "Offshore Execution"  |   |   |   |                                    |   |
| Week 25 | 11-Aug        |   |   |   |   |                                    |   |
| Week 26 | 18-Aug        |   |   |   |   |                                    |   |
| Week 27 | 25-Aug        |   |   |   |   |                                    |   |
| Week 28 | 1-Sep         |   |   |   |   |                                    |   |
| Week 29 | 8-Sep         |   |   |   |   |                                    |   |
| Week 30 | 15-Sep        |   |   |   |   |                                    |   |
| Week 31 | 22-Sep        |   |   |   |   |                                    |   |
| Week 32 | 29-Sep        |   |   |   |   |                                    |   |
| Week 33 | 6-Oct         |   |   |   |   |                                    |   |
| Week 34 | 13-Oct        |   |   |   |   |                                    |   |





## Key Features

Harsh environment unit for worldwide operations

440 bed accommodation capacity, all single bed cabins

FS 70/FE 80 office work stations

Open Deck storage area: 1 100 – 1 300 m<sup>2</sup>

Payload: abt 2000 metric tonnes

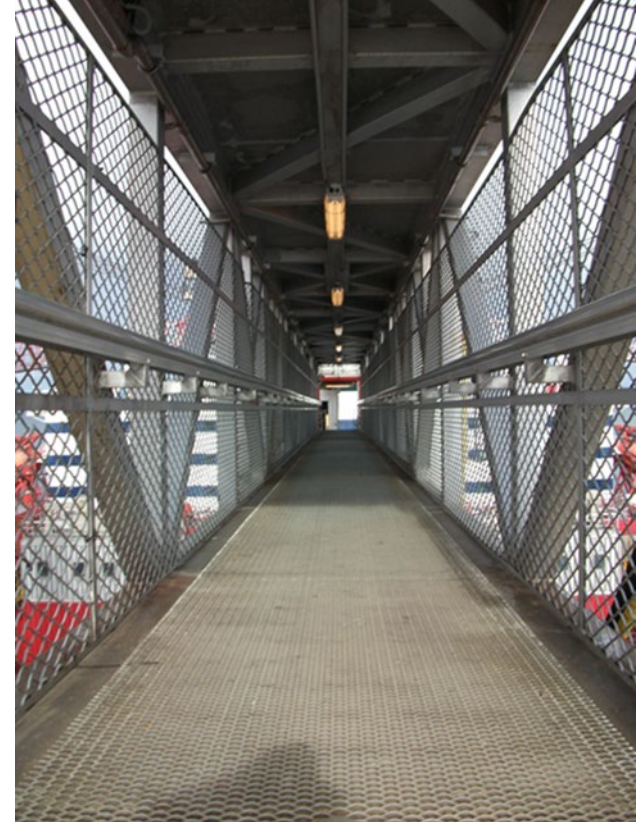
Offshore crane support each crane rigged for 50 MT

Workshop and warehouse facilities for construction support

Telescopic gangway 38m. +/- 7.5m telescopic action

# ASV – Floatel Endurance

# Floatel Endurance - Gangway Access





# Floatel Endurance



Deck Area



# Floatel Endurance – Interior



Cabin Layout - Single Cabins

# Floatel Endurance – Interior



Mess Area



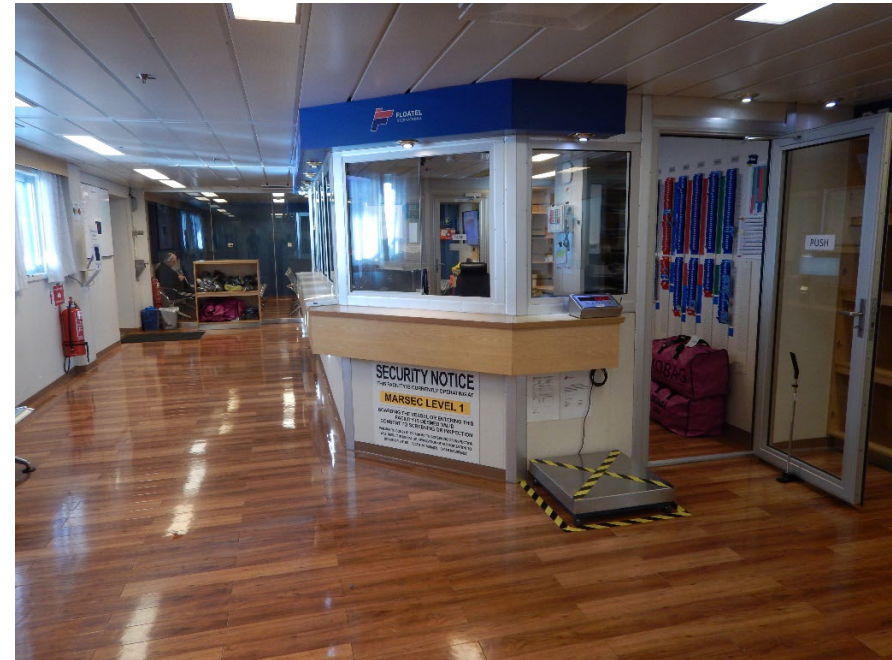
Recreation Area & Lounge



# Floatel Endurance – Interior



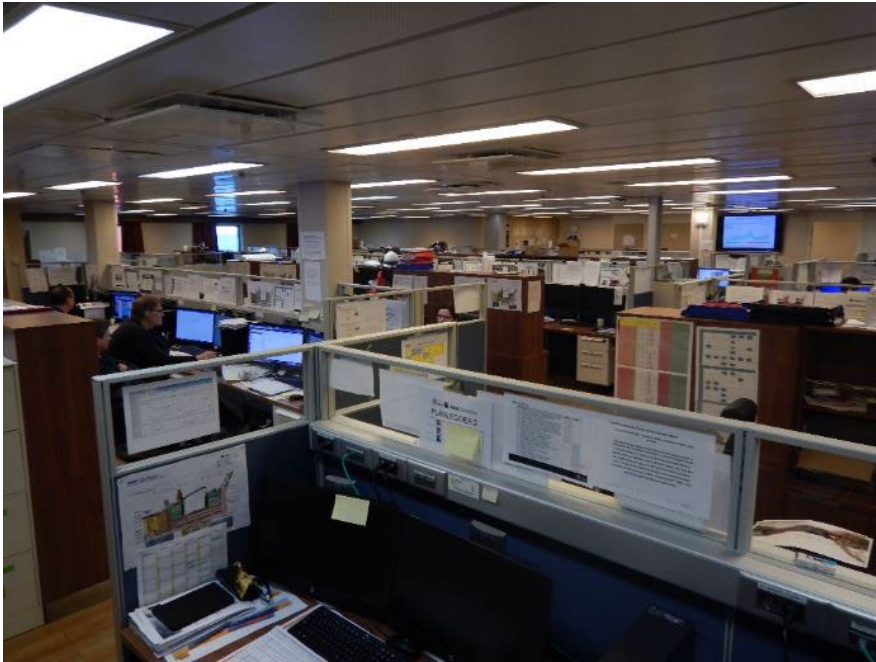
Mess Serving Area



Arrivals & Departure Lounge



# Floatel Endurance – Interior



Office Area

Internet Café



Internet Cafe

# Floatel Endurance – Interior



Cinema / Meeting Room



Gymnasium



Thank You